

EM 4014

自动牛仔包边单元

生产效率

每日产量：每8小时：
700-900 条牛仔裤包边（内侧缝或者外侧缝）

技术特点

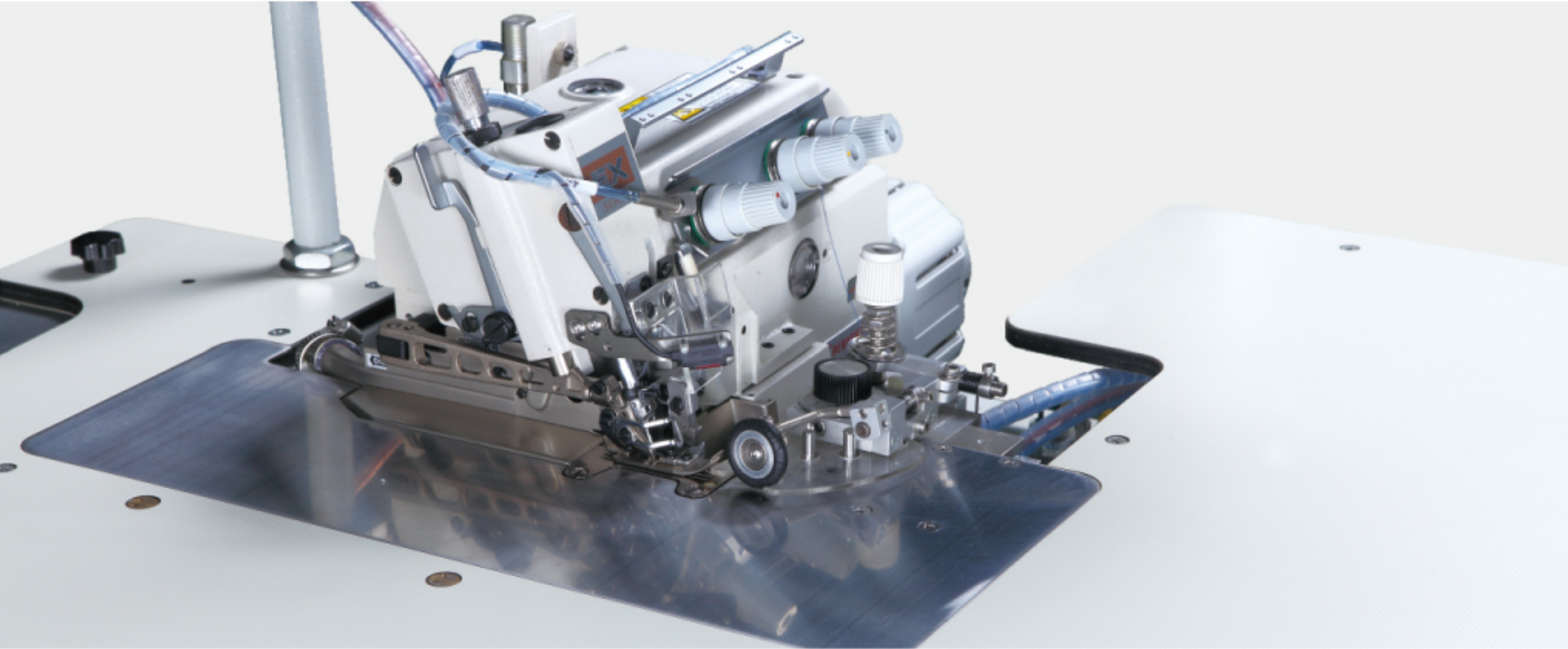
- 飞马机头，带自动剪线吸风装置KH；
- 高度可调节的控边装置；
- 缝料由控边装置控制，自动包边并叠料；
- 自动修剪线毛，清除废屑，但不剪缝料；
- 西门子控制系统，彩色触摸屏；
- 机架高度可调，适合站立或者坐着操作。

适用范围

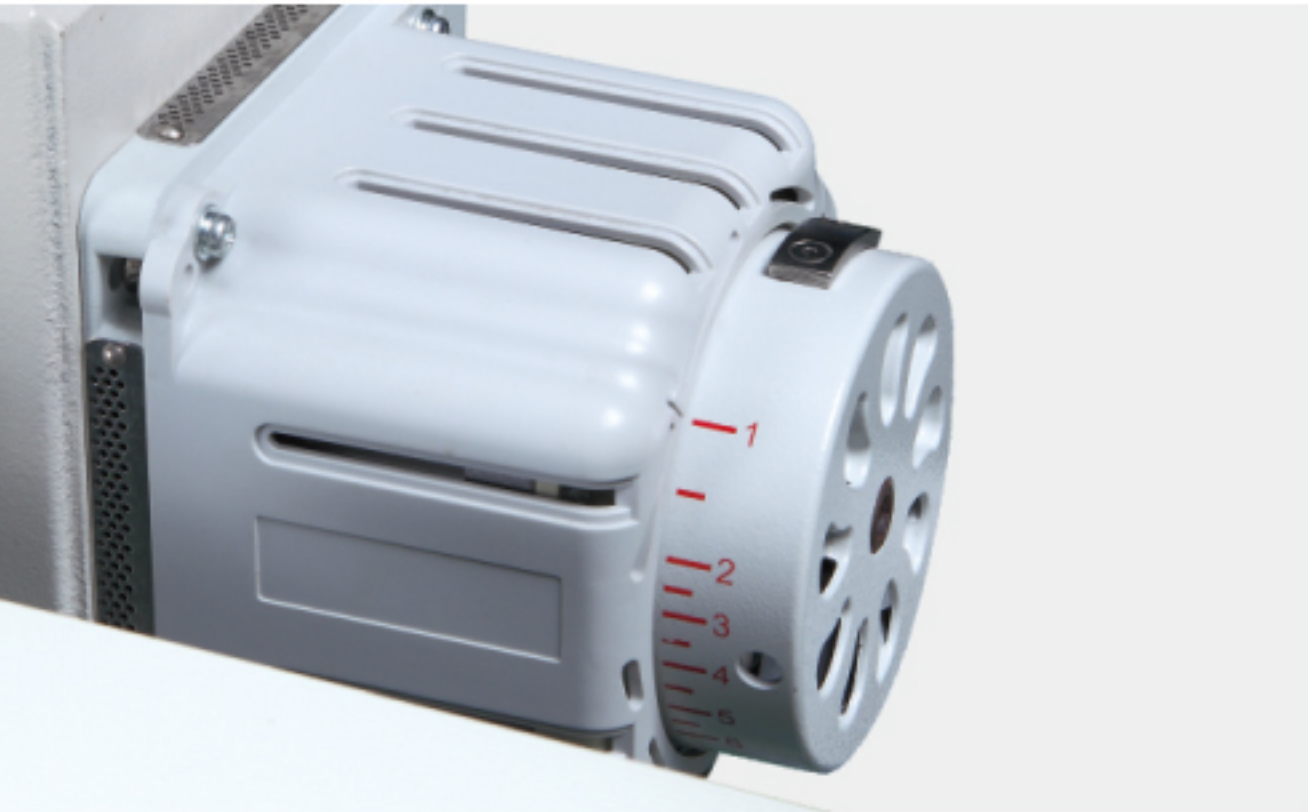
EM 4014适合牛仔外侧或者内侧自动包边。机器操作非常容易，通过短时间的培训即可激发设备的无限生产潜力，减少对生产熟练工人的依赖。



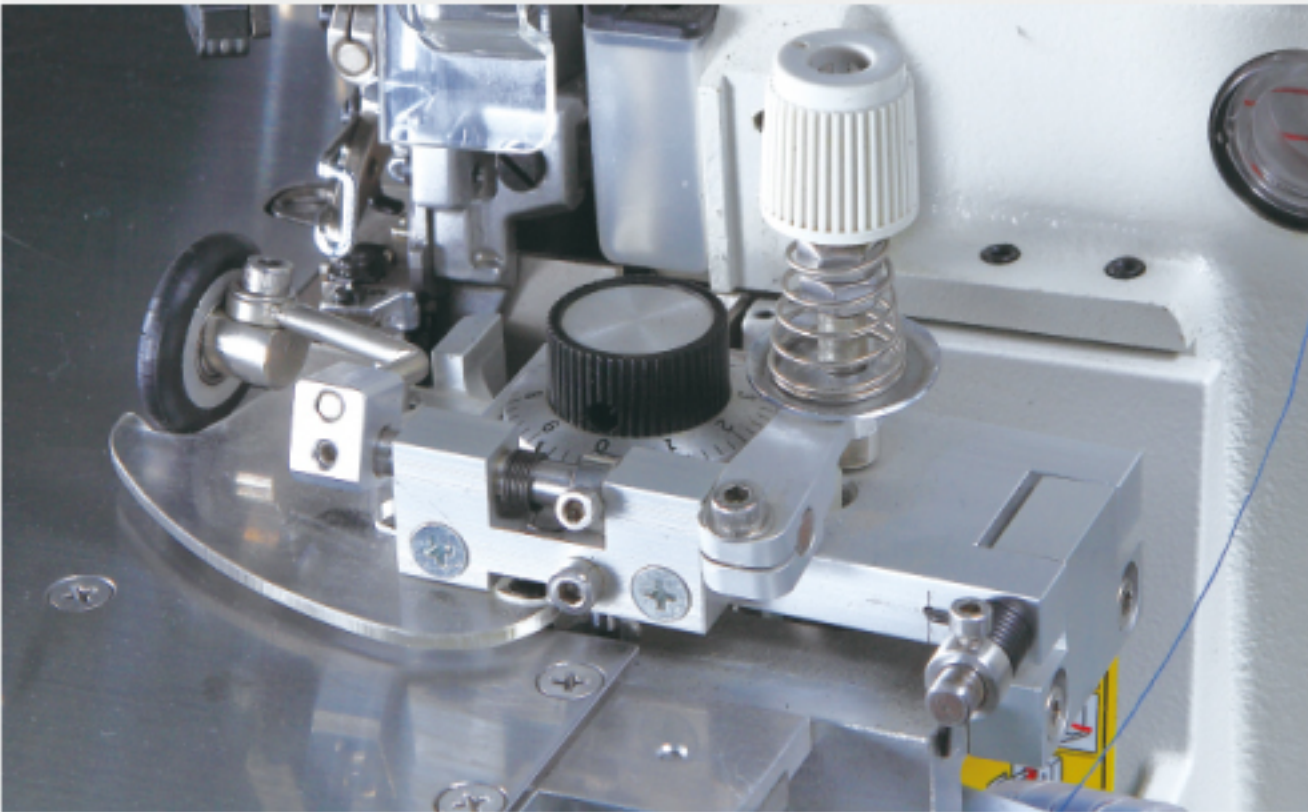
EM 4014 产品视频



控边装置



贺欣直驱



高度可调节的控边装置

技术规格

型号	EM 4014
采用机头标准	EX 5204-24/445（可根据客户需要定制）
机针数	1
线数	3
最大缝速	6500转/分
线缝宽度	7-8毫米
最大线迹长度	5毫米
差动	0.8-1.5
压脚抬升高度	7毫米
电源	220伏,50-60赫兹
功率	0.7千瓦
机器尺寸	1470×900毫米
标准配置重量	120公斤

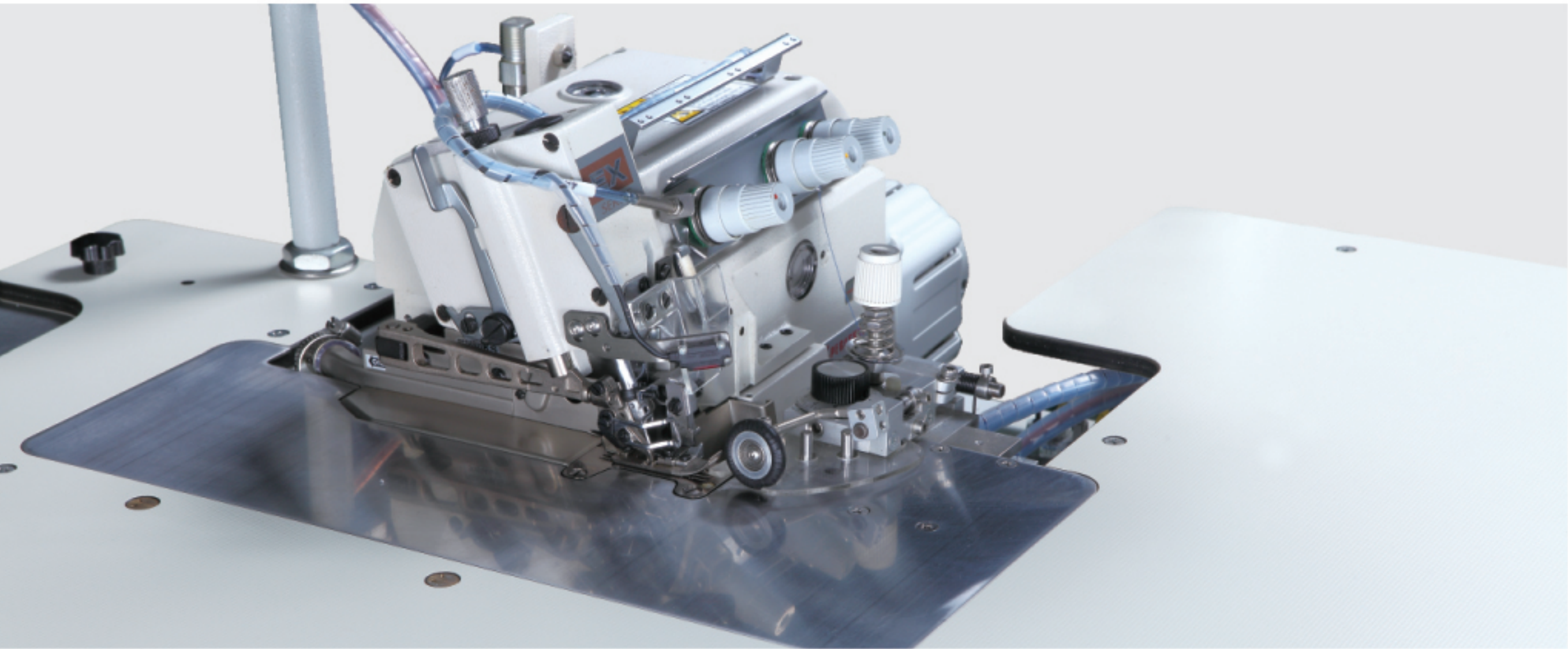
EM 4014

Automatic denim overlock unit

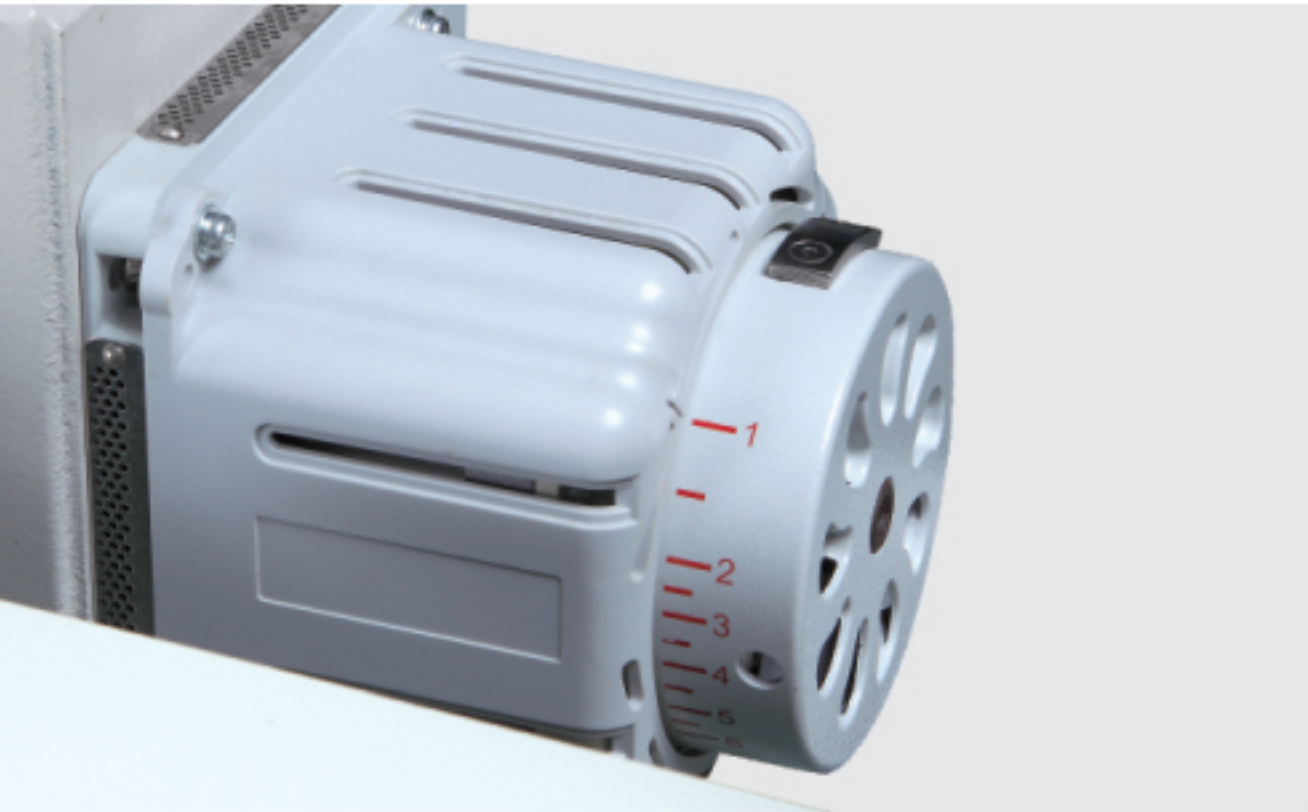
Efficiency
Daily output (8 hours):
700–900 trousers per 8 hours (outside seams).

- Features**
- Pegasus sewing head with automatic thread suction device KH.
 - Height adjustment contour guide with quick adjustment.
 - The work piece is controlled by the contour guide,sewn and stacked automatically.
 - Automatic chain cutting and lint cutting without affecting sewing material.Dust and rest thread collector.
 - Siemens control system and graphic colorful touch screen.
 - Hohsing direct drive motor and control box.
 - Height adjustable stand for sitting or standing operation.

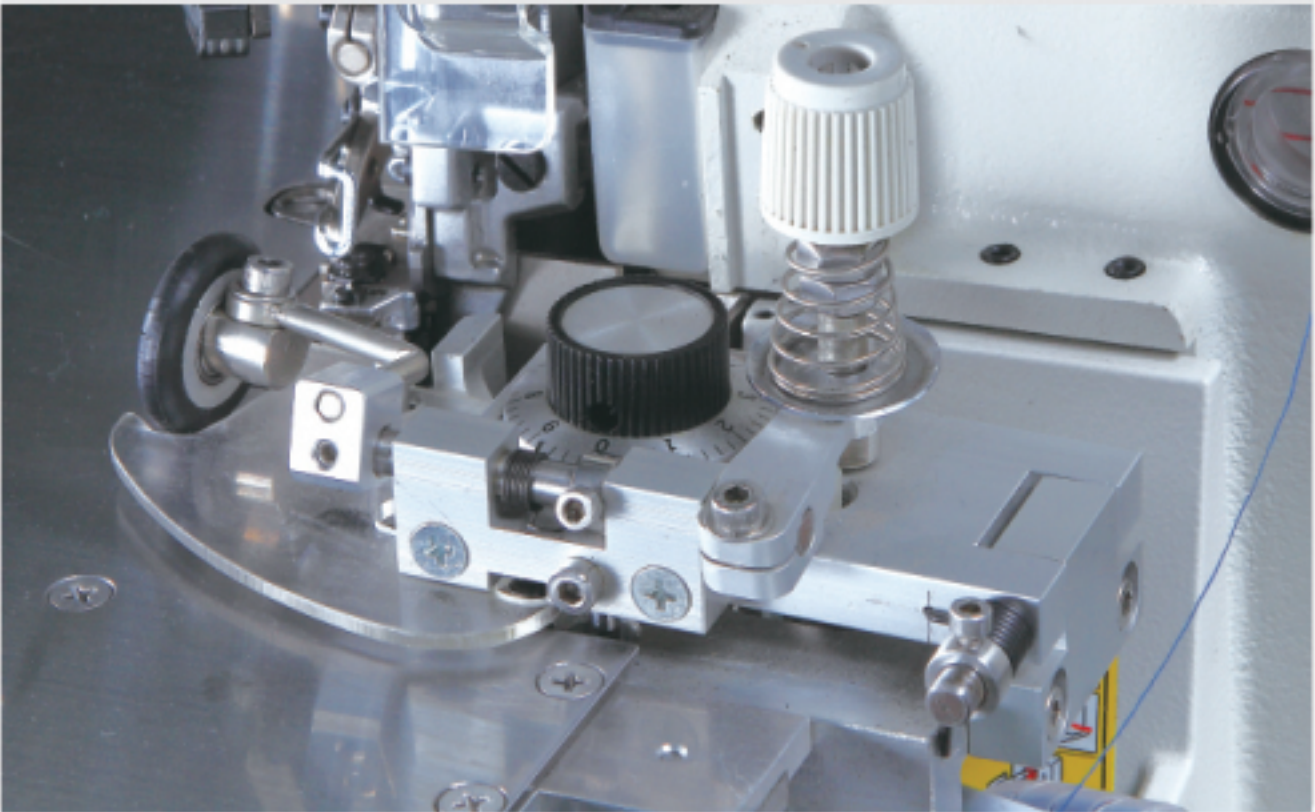
Applications
EM 4014 is a compact serging unit for overlocking jeans inseam and outside seams.
The easy-to-operate working process ensures superb production potential at short training periods.



Contour guide



Hohsing direct drive



Height adjustable guide

Technical specifications

Model	EM 4014
Machine head	standard EX 5204–24/445(others at customer demand)
Needle number	1
Thread	3
Max. sewing speed	6500rpm
Seam width	7–8mm
Max. stitch length	5mm
Differential	0.8–1.5
Presser foot lifting height	7mm
Power supply	220V,50–60Hz
Power	0.7kw
Machine size	1470 × 900mm
Weight	120kg